

### Remake The World Part 2

Continued from preceding page

God, to his wife (the new Church). This new Church is not Jesus' body, but this Church is made of Jesus' body. The man turns to it and listens to it instead of listening to the God that formed Jesus himself. What happened to the true spirit, the true mind, the wisdom body or knowledge body of Jesus? When this happened, it fell asleep. There was nothing to continue to feed it. It was no longer in touch with the Divine makeup. It only had emotionalism feeding it so it went into a deep sleep.

#### THE FORBIDDEN TREE

The Book says that one tree was pointed out to the man and he was told not to eat of it because the day he eats of it he will surely die. What is this forbidden tree that, if you eat of it, you will surely die?

It is mixed-up knowledge; lies mixed with truth, religious truth mixed up with religious lies. It is the tree of religious lies and religious truth growing together in one tree. When you eat the fruit of that tree you're eating a religious body of knowledge that looks like religion. But when it goes into you, there are religious lies in that truth.

It kills you spiritually, it kills you as a Divine person.

"Oh, I don't believe that. I know I'm a good Christian and it didn't kill me." Well, maybe you're not dead yet, but you're dying. If you hold on to Christianity you will soon be dead.

#### THE SERPENT:

##### CURSED TO LICK THE DUST

There are three parts to the man. In the human form there is willpower. There is also wit, that part of the intelligence that glorifies in its own product. It likes to show off. Wit in man was once not a showoff thing. It was humble and submissive and it was agreeable with Divine dictates. When it was in that form it was upright.

In Genesis, the serpent is described as an upright serpent before it committed sin. Remember that the serpent here is not wit, but obedient intelligence. When the serpent committed sin, it was cursed to go on its belly in the earth, according to Genesis.

This means that if you turn your intelligence into a tool to match wits with the Divine Being, you will fall down on the earth, for God will no longer feed your intelligence.

It won't remain upright. It won't have the power to stand up against the gravity of materialism. It will fall down on the earth, crawling like a snake, and it will be cursed to lick the dust. That means that it will be cursed to feed upon nothing but materialism and that will prevent the continuation of its Divine growth.

We have in the story the willpower. Originally it was Will in the man that was given to creation by God from His own Will. The Will came into the world, became intelligent, and was upright until it rebelled against its own maker. When it rebelled against its maker, intelligence fell down to wit. Wit is not always intelligent.

Let's see if we can give you something that will help you to see this.

Even in our common talk today, we may speak of another person as being a low creature. Still carrying this old language from thousands of years ago, we mean that he goes like a snake on the ground, out of view, crawling low so he can hide in the grass.

#### THE EYE OF DIVINE LIFE

AND

#### THE EYE OF GRAFTED NATURE

Where does hoggishness come in?

The hoggishness comes in with "the woman." The woman in the early part of Genesis is hoggishness, the inability to control your appetite. God says not to eat certain things, but you're so hoggish that you can't obey Him. You have to eat everything.

So the serpent in the form of wit comes to the weak person who can't control his hoggish...

### MUHAMMAD SPEAKS

appetite for everything. It won't go right to the willpower in the person. It has to go around the willpower because it knows that if it appeals to your willpower, suddenly the eye and the ear of your willpower will come open and you'll say, "No, I'm going to be stronger than this."

So it leaves the willpower sleeping and it comes to you in that form called the hoggish form of the person. It says to you that God didn't mean that you would surely die. Your eyes will just come open and you will become one of the Gods, knowing both good and evil.

Just think about this. What eye is going to come open? God said that those who would eat of the forbidden tree would die? That tells us the eye of the man's Divine life was going to close and the eye of his grafted-nature (his wicked nature) was going to open. He was going to begin seeing with wicked, low, filthy eyes. He would begin hearing with the ears of wickedness and filth. So it only means that the man's Divine nature would die and his weak nature would come alive.

We have a thing happening to the man that is really bringing him down beneath the lowest creatures of the earth. His willpower dies and his hoggish nature takes over because his wit stood up to justify self-destruction. Are the willpower, the wit, and the hoggish nature separate things? No, all of these are in everybody.

#### "I WILL PUT ENMITY

##### BETWEEN THEE AND THE WOMAN"

In the human history we can read the effects of two decisions, two judgments, or two choices: the individual and the Divine. The individual choice leads to the loss of willpower, the loss of intelligent development, and the enslavement to the hoggish nature of the human being.

Genesis Chapter 3, Verse 14 says: "And the Lord God said unto the serpent, 'Because thou hast done this, thou art cursed above all cattle and above every beast of the field; upon thy belly shalt thou go, and dust shalt thou eat all the days of thy life: and I will put enmity between thee and the woman.'"

The "woman" here is the Church made from the body of knowledge we call the Jesus.

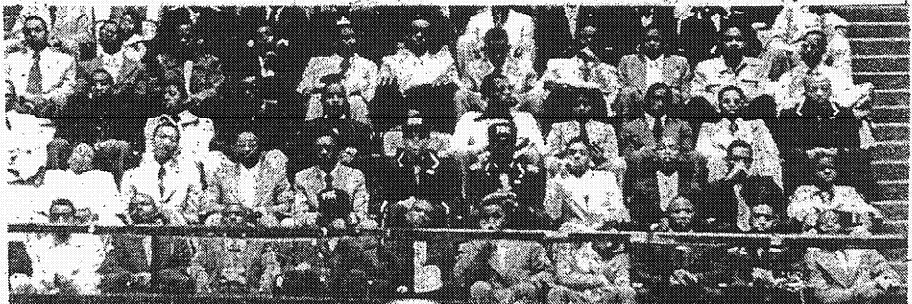
There is going to be enmity (hatred) put between the Church and the true Jesus. It says, "And between your seed and her seed."

This means that every time an innocent person in religion (Christianity) comes up with truth or finds a bit of truth and tries to show that truth to the Church, the Church is going to fight him. If he is killed and his seed grows up, a seed from the Church is going to be there to fight that seed.

"Is a Church that bad?"

The Bible says that it shall bruise your head and you shall bruise its heel.

The head is the Divine body of knowledge, meaning that it shall corrupt that Divine body of knowledge. What is the heel? The heel is the innocent people, the weak people, those that are



## THERE IS NO GOD BUT ALLAH... AND MUHAMMAD IS HIS SERVANT

ISLAM AS A WAY of life is gaining widespread acceptance among Blacks in America. Pictured above is part of crowd of more than 25,000 persons who filled the Philadelphia Convention Center to hear the Honorable Wallace D. Muhammad lecture on the subject, "Remake the World."

called dumb or uneducated people in religion. How are they going to be bruised? They are going to be hurt because they don't have enough knowledge to deal with the body that is given to them called "Jesus." It's going to mess them up.

#### THE CHURCH IS CURSED

Genesis Chapter 3, Verse 17 says: "And unto Adam he said, 'Because thou hast hearkened unto the voice of thy wife, and has eaten of the tree, of which I commanded thee, saying, thou shalt not eat of it: cursed is the ground for thy sake; in sorrow shalt thou eat of it all the days of thy life.'"

Who is this Adam that is cursed?

This Adam is the one that was dead before. It says that he went into a deep sleep; so he was sleep before the Church was made from him. This body of knowledge, the Church, comes now into what we call the doctrine or the consciousness of the Church. In the man, after he goes to sleep, Jesus is gone and we have the doctrine carrying on the Church. This doctrine now also has a conscience that goes along with it.

That Church conscience is plagued with the corruption that has come into Christianity and it can't live on the real Divine Truth. It has to live also on the physical things. The Church's strength is collections, harps, organs, trumpets, drums, electric guitars, physical shouting and a lot of physical noise. It's cursed now to go back to these physical things for its very life.

The Genesis has been corrupted, but it's not so corrupted that we can't bring the truth out of it.

#### THE GENESIS OF THE CHURCH

Genesis Chapter 3, Verse 18 says: "Thorns also and thistles shall it bring forth to thee; and thou shalt eat the herb of the field," meaning the weak people or the ignorant people of the Church. An herb is something that is not strong like a tree. It bends with the wind. The Church body that rules over the Church is going to have to feed upon the weak of religion and upon material things.

Genesis Chapter 5, Verse 2 says: "Male and female created he them; and called their name Adam, in the day when they were created."

We have a clue here.

It is telling us that Adam is not a single person, but a community of people. In Chapter 5 the community is identified. It says that He named them "Adam."

This is not the creation or the Genesis of one person, from which was taken a female and began the creation or the spread of people on earth as physical beings, but this is the Genesis of a religious order. What we really have here is the Genesis of the Church.

#### A THIRD PART OF YOU

##### SHALL BE PORTERS OF THE DOORS

The 2nd Chronicles, Chapter 23, Verse 4 says: "This is the thing that ye shall do; a third part of you entering on the Sabbath, of the priests and of

The light of the Divine Wisdom shines like the...