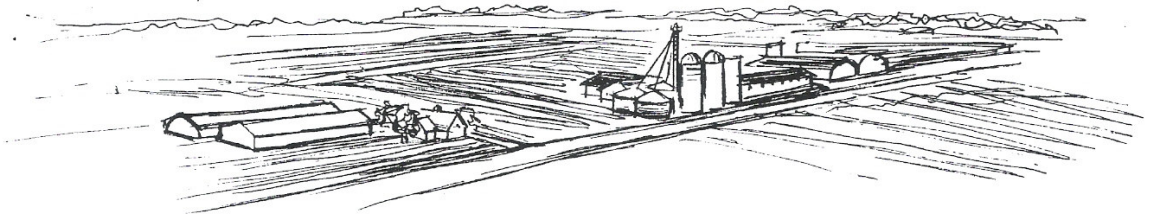
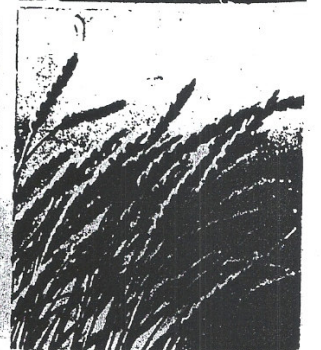
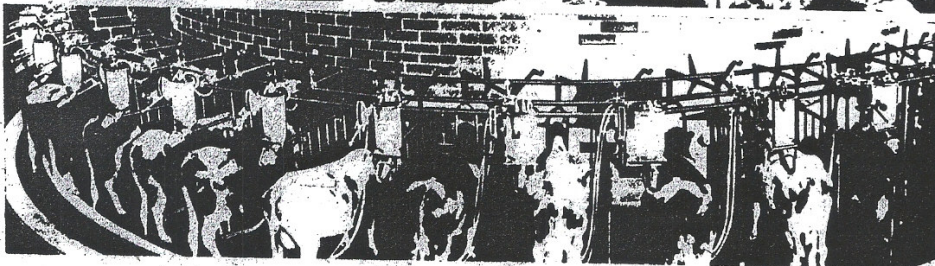


Muslim Farms in Alabama, Georgia, and Michigan



In Michigan, we have over 843 acres of pastures and other farm land costing in excess of \$500,000.00 which was paid in cash.

- A modern, sanitary 110 cow milk dairy
- A modern, machine feed
- 20,000 chicken capacity breeding house
- A modern, 10,000-eggs-per-day laying factory
- A 450 Tree Apple Orchard
- A 60-Acre Fruit farm
- A Modern machine farming equipment
- Modern Homes for Farm Manager and farm help
- Fertile pastures for over 200 head of cattle and over 600 head of sheep and a 1969 harvest of corn, beans, cabbage, wheat, navy beans, snap beans, apples, strawberries, squash and other crops



NOVEMBER 7, 1969

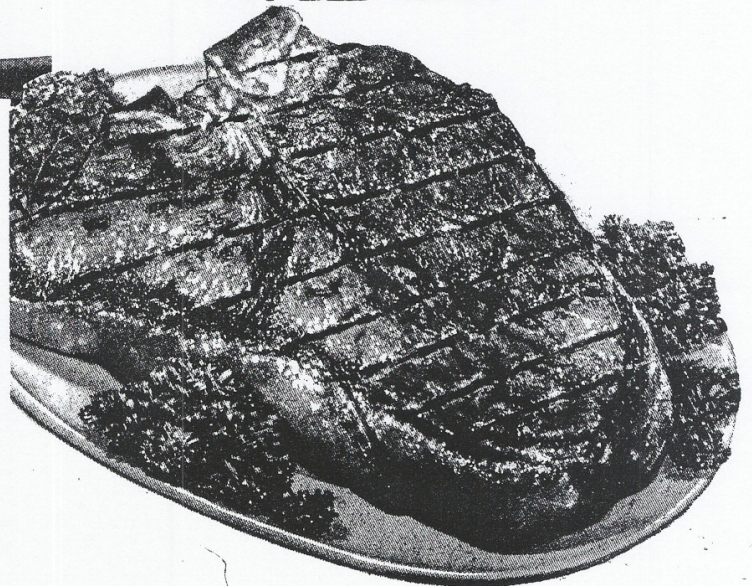
MUHAMMAD SPEAKS

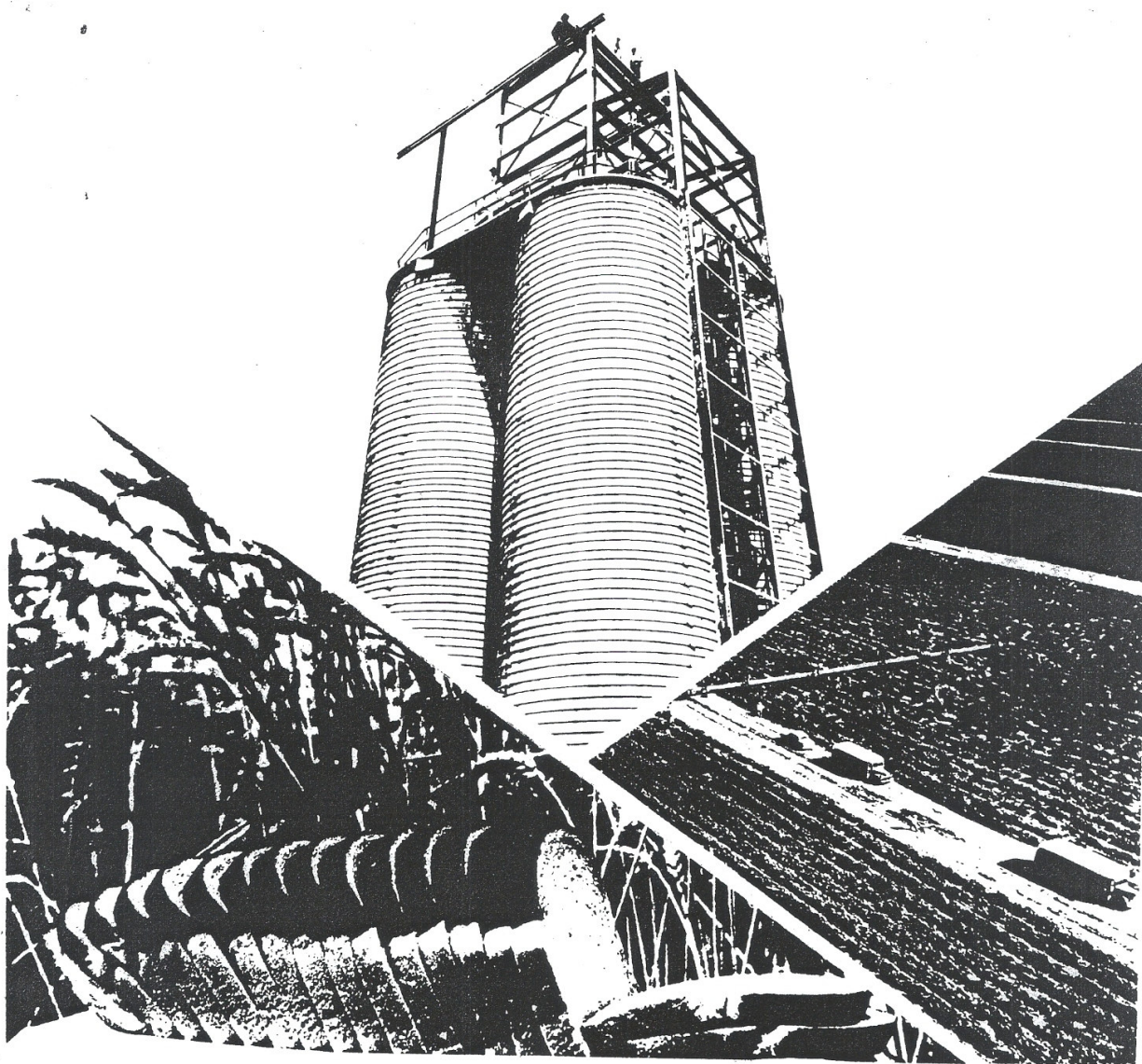
ON THE WAY...



TO YOUR TABLE!

High Quality, Top Grade meats will be available to Black people in Chicago and nearby areas at lower prices than ever before possible, because the Honorable Elijah Muhammad has stripped the profits from the live stock markets by independently building a modern, 100-ton capacity, sanitary—United States Department of Agriculture approved meat processing and manufacturing plant, from which the Nation of Islam's cattle will be processed for marketing. The plant was built at a cost of more than \$125,000, which was paid completely in cash. Beef, lamb and chicken will be shipped in modern refrigerated trucks from the Nation of Islam's farms and other markets in Michigan, Georgia and Alabama and processed in this plant.





In Georgia, we have a half-million dollar farm of over 2200 acres of pastures and crop producing land paid for in cash. The harvest for 1969 included wheat, peanuts, soy beans, corn, watermelons and other crops. A modern cattle ranch of over 500 head of cattle are housed on this farm, which also contains the following facilities:

- *A modern, sanitary dairy*
- *Two 65,000-bushel capacity silos*
- *A modern cannery*

In Alabama, we have over 908 acres of farm land valued in excess of \$350,000, paid for in cash. This farm contains:

- *A mechanized, modern saw mill*
- *A railroad siding facility*
- *A dairy farm*
- *A cattle water spring*

